

Goldthorpe Masterplan framework Health Impact Assessment

Draft Version2

Date 31 August 2021

[Click here to enter text.](#)

Goldthorpe Masterplan Framework - Health Impact Assessment

1 Introduction

This Health Impact Assessment (HIA) considers the health and wellbeing implications identified in relation to the Goldthorpe Masterplan Framework. The assessment has been based on the information available at this stage of preferred option Masterplan Framework.

The preferred option within the masterplan framework was presented within the consultation material as option 2, a mixture of large and smaller scale buildings which are considered to be more attractive to the market and result in longer leases. Access to the site will predominately be taken from the A635 with a possible secondary access from Dudley Drive. A wildlife corridor will run through the site and ensures the retention of important trees and hedgerows, as well as making the site more visually attractive. Additional planting and landscaping will be undertaken to the edges of the site to minimise the impact on existing residential and educational receptors. Public rights of way will be enhanced to encourage active travel. The masterplan framework requires a 10% Biodiversity Net Gain to be delivered. This will be delivered off-site to complement to existing RSPB Old Moor site.

The HIA ensures health and wellbeing principles are properly considered and embedded within the Masterplan Framework. The HIA promotes sustainable development to support the creation of strong, vibrant and healthy communities. Planning for healthy and successful communities requires the provision of affordable homes; secure, good quality jobs; and services that people need, whilst designing these places to facilitate healthy, active lifestyles alongside minimal environmental risk. This assessment considers a range of health determinants for Goldthorpe and assesses the Masterplan Framework against these.

The HIA should be read in conjunction with the Goldthorpe Masterplan Framework.

2 Description of development and site context

The Goldthorpe ES10 site is located within the Dearne South ward. It is a 73-hectare site allocated for employment use under policy ES10 within the Barnsley Local Plan (2019). The site is to the south of the A635 west of the settlement of Goldthorpe. The site is bordered to the east predominantly by the built environment comprising both Goldthorpe Industrial Estate and residential properties within the conurbations of Goldthorpe and Bolton Upon Dearne. The site's north boundary comprises mainly the A635, with arable land and the village of Billingley beyond, and the RSPB Old Moor Wetlands Reserve is to the south. To the west of the site arable land extends to the A6195 south of Cathill roundabout.

The site is located west of the A1(M) and east of the M1 Motorway. There are a range of local facilities and amenities within a 5- and 10-minute walk of the site (400m and 800m respectively). The centre of Goldthorpe is approximately 1.7km away to the east of the site which is approximately a 25-minute walk. The site is well served by public transport and Goldthorpe train station is approximately a 20-minute walk from the site. Within the 10-minute walking catchment area, future employees would have access to Aldi supermarket and other facilities within Highgate.

The site itself comprises of arable farmland, with a network of hedgerows and ditches running through it. Areas of plantation woodland are present along the northern boundary with the Barnsley Road, whilst more mature broadleaved woodland is present on long stretches of Carr Dike, which flows through the centre of the site.

For Dearne South, over 98% of the population is white. 0.9% of households have no people with English as a main language. 99.5% of the ward are Christian. The masterplan framework also falls within the Darfield ward. 98% of the population are white. 1.5% of households contain someone who does not have English as a main language.

3 Evidence

A review of the existing policy and evidence base relating to the site is set out below. These have been taken into consideration and have informed the key challenges and priorities for Goldthorpe.

Local Policy Review and Strategies

Barnsley Local Plan (2019)¹

The vision for Barnsley is “Working together for a brighter future, a better Barnsley.”

A key objective of the Local Plan is to improve the conditions in which people live, work, travel and take leisure. The Local Plan promotes sustainable development and communities.

Policy SD1: Presumption in favour of Sustainable Development states that a positive and proactive approach to sustainable development should be considered in development proposals.

Joint Strategic Needs Assessment²

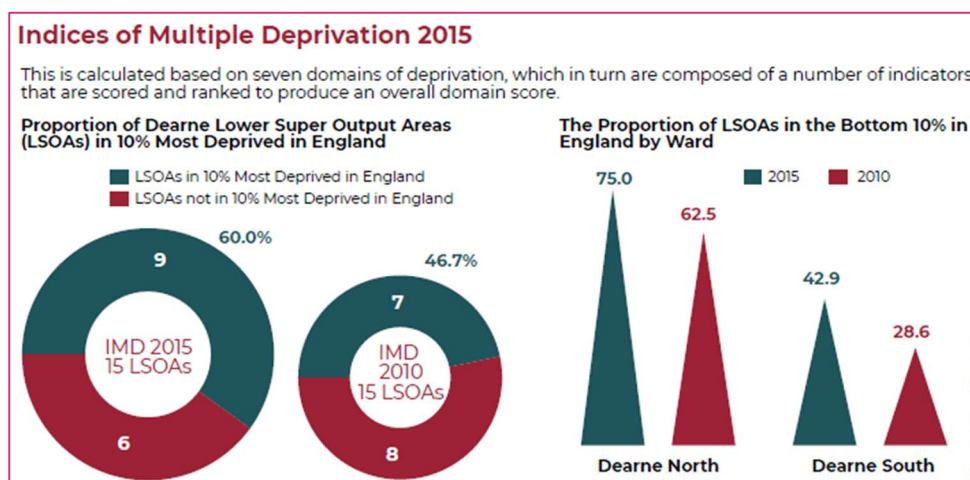
A Joint Strategic Needs Assessment (JSNA) has been carried out by Barnsley MBC and the Barnsley Clinical Commissioning Group to draw together various strategies and intelligence on the determinants of health. It sets out the overarching objectives to improve the population’s health and wellbeing and reduce health inequalities by ensuring improvement is fastest for those with greatest need.

The Dearne Area Council Profile 2019:

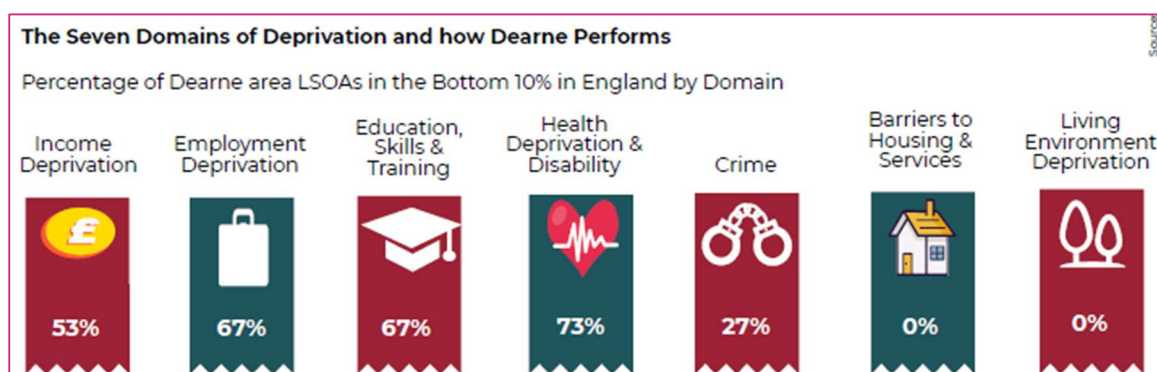
- Since the 2011 Census, the resident population of the Dearne has increased by 3.5%, whereas across Barnsley there was a 4.9% increase.
- The resident population of the Dearne consists of more young people (under 19 years), a similar proportion of those of working age and slightly fewer people of pensionable age when compared to Barnsley and nationally.

¹ <https://www.barnsley.gov.uk/media/9924/local-plan-adopted.pdf>

² <https://www.barnsley.gov.uk/services/our-council/research-data-and-statistics/barnsley-joint-strategic-needs-assessment/>



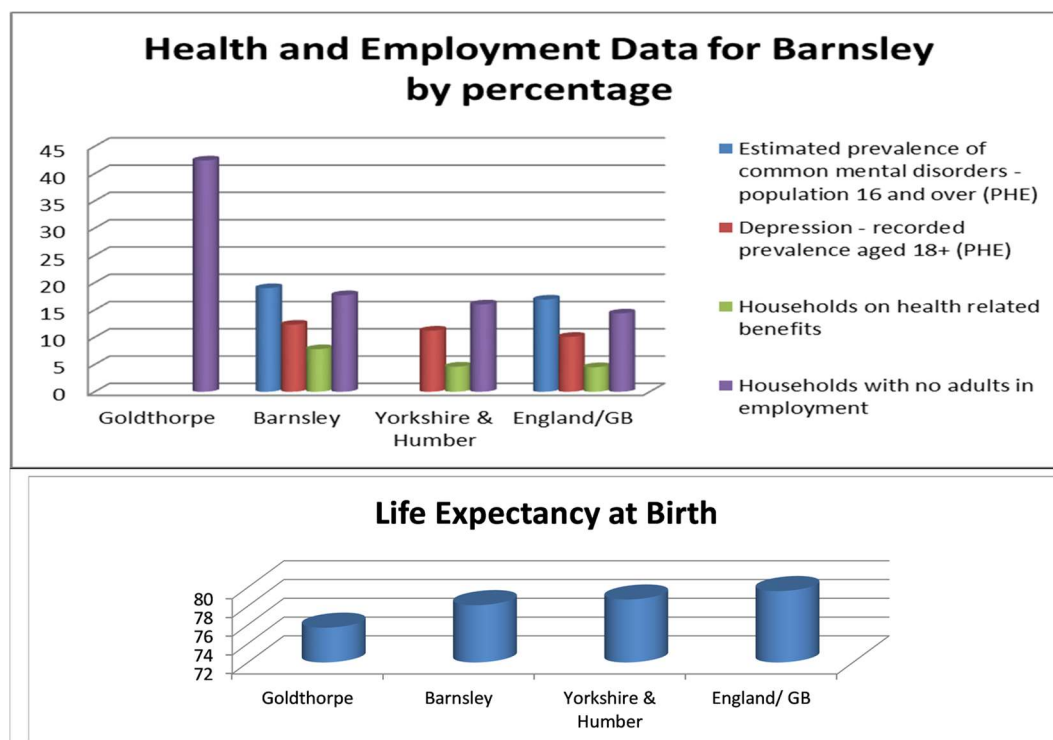
- 24.7% of Barnsley's working age population are economically inactive compared to 21% England, of that economically inactive population, 31% are inactive due to long term health issues. Goldthorpe has the highest level of income deprivation within Barnsley.



- The 2011 Census showed that 12.8% of the residents in the Dearne aged 65+ lived alone and could be at risk of social isolation. Rates are similar to those levels across Barnsley and nationally.
- The percentage of primary and secondary school pupils eligible for and claiming a free school meal in the Dearne remains well above the Barnsley average and more than double the national average

Health & Wellbeing indicators

- Life expectancy at birth for males in the Dearne is 1.1 years lower than for men in Barnsley
- Life expectancy at birth for women is 1.5 years lower than for Barnsley as a whole
- The mortality rate from causes considered preventable in the Dearne area is higher than those of Barnsley and England
- The proportion of 4-5 year olds in the Dearne area who are overweight or obese (16.7%) is lower than the proportion in Barnsley overall (18.0%)
- The proportion of 10-11 year olds in the Dearne area who are overweight or obese has been consistently higher than the proportion in Barnsley overall at each time point during the period 2012-2013 to 2017-2018



The Darfield Area Council Profile 2019:

Part of the Masterplan site is located in the Darfield Area

- Since the 2011 Census, the resident population in Darfield has increased by 3.3% compared to 4.9% in Barnsley overall
- Darfield has a higher proportion of 65+ year olds than both Barnsley and England.
- Life expectancy at birth for males in Darfield is 0.9 years higher than for men in Barnsley and 0.3 years higher than England.
- Life expectancy at birth for females in Darfield is 1.6 years higher than for women in Barnsley and 0.4 years higher than England
- Darfield's under 75 cancer mortality rate (189.6 per 100,000) is higher than the Barnsley rate of 152.4 and is higher than the previous period.
- Under 75 mortality from respiratory diseases in Darfield (53.4 per 100,000) is higher than the Barnsley rate of 41.8.
- The mortality rate from causes considered preventable in Darfield is higher than those of Barnsley and England and has increased from the previous period

Barnsley Public Health Strategy 2018-2021³

Barnsley Public Health Strategy sets out short term priorities to focus on to contribute to achieving the longer term public health outcomes:

³ <https://www.barnsley.gov.uk/media/9278/public-health-strategy-2018-21.pdf>

- Our residents will start life healthy and stay healthy
- Our residents will live longer healthier lives
- We narrow the gap in life expectancy and health between the most and least healthy
- We protect our communities from harm, health incidents and other preventable health threats.

The six short term public health priorities include: food, alcohol, emotional resilience, oral health of children, smoke free generation, and physical activity. Each priority will have a comprehensive action plan developed in consultation with partners and other stakeholders.

Residential Amenity and the Siting of Buildings SPD (2019)

This SPD sets out the criteria that development proposals must meet regarding the design of non residential buildings in proximity to existing residential properties.

- High standards of privacy, light and outlook.
- Development must respect local context, history, built heritage, character and communities.
- Layouts to improve the health and wellbeing of the residents and occupiers of new development.
- Measures to design out crime.
- Design and layout of streets.
- Landscape design and retention of existing trees and vegetation
- Public Rights of Way.
- Recycling / waste provision.

Goldthorpe Town Investment Plan (2020)

The Town Investment plan outlines Goldthorpe town's position to deliver an outward facing growth agenda due to its linkages with the wider Deane Valley communities. It is the second and tenth most populous area in the Sheffield City Region and Northern Powerhouse respectively.

The Town Deal identified key economic, health & social challenges in Goldthorpe:

1. ***Lack of economic diversity and higher-value work:*** Half of jobs are in retail & wholesale or manufacturing. 2% of jobs are in professional and technical sectors
2. ***Residents can't compete for better-paid jobs:*** local employers report they have vacancies, but they are difficult to fill due to basic skills issues, motivation, travel, experience and employability skills of residents (DWP).

"we need more employers with more opportunities for Apprenticeships, and community learning"
(Engagement Feedback 2020)

3. **Health inequalities:** Approximately 85% of residents live in the 20% most deprived LSOAs nationally in terms of health and disability. Life expectancy at birth is almost four years below the national average.

4. **Poor connectivity in and around Goldthorpe**

"This is a tricky catchment area as it is near, but not near enough, to Rotherham, Barnsley and Doncaster, so bus routes take forever as most are indirect."

(Engagement Feedback 2020)

5. **Poor-quality built environment**

6. **Economy vulnerable to COVID shocks**

The evidence-based theory is that the low-value economy, poor employability skill levels, and health inequalities provide the complex context in which barriers to wellbeing and long-term employment are commonplace. Wider initiatives are seeking to address these issues at a macro level.

4 Approach to assessment

4.1 Summary of community health profile and key challenges

The evidence base has identified a range of data & intelligence including key health indicators to provide a profile of the demographic and health status of the population around the Goldthorpe site located within Dearne.

In the Dearne South area, over 98% of the population is white. 0.9% of households have no people with English as a main language. The masterplan framework also falls within the Darfield ward where 98% of the population are white. 1.5% of households contain someone who does not have English as a main language.

The site is located west of the A1(M) and east of the M1 Motorway and provides a range of local facilities and amenities within a 5- and 10-minute walk of the site (400m and 800m respectively). The centre of Goldthorpe is approximately 1.7km away to the east of the site which is approximately a 25-minute walk. The site is well served by public transport and Goldthorpe train station is approximately a 20-minute walk from the site. Within the 10-minute walking catchment area, future employees would have access to Aldi supermarket and other facilities within Highgate.

There are high levels of employment deprivation, including high levels of education, skills and training deprivation. It will therefore be important for the site to provide strong links to the employment site and to local job opportunities.

The site itself comprises of arable farmland, with a network of hedgerows and ditches running through it. Areas of plantation woodland are present along the northern boundary with the Barnsley Road, whilst more mature broadleaved woodland is present on long stretches of Carr Dike, which

flows through the centre of the site. The Masterplan will provide improved access to green space for leisure and active travel opportunities and will help improve employee's health & wellbeing.

During construction phase, mitigating any noise, air, and vibration issues will need to be integrated into subsequent planning applications linked to the Masterplan Framework.

The masterplan framework will set out clear requirements for improved renewable energy opportunities and sustainability measures including electric vehicle charging points, use of sustainable design and construction techniques, use of solar and green roofs, use of Sustainable Drainage Systems (SuDS), investment within green infrastructure and a requirement for a minimum 10% Biodiversity Net Gain. These improvements in energy and sustainability measures will have positive health implications for potential employers/employees.

In summary, the key health challenges for the area are related to access to employment and skills deprivation. Providing access to employment sites, essential facilities and social infrastructure will be crucial to dealing with employment and skills deprivation within the area.

Incorporating opportunities for active lifestyles within the Masterplan Framework will be important to address some of these key health issues.

4.2 Methodology

The promotion of health and wellbeing is inherently embedded in the Masterplan Framework. The Masterplan Framework promotes sustainable development to support the creation of strong, vibrant and healthy communities.

The health impact assessment takes into consideration nine broad determinants of health using the HUDU Rapid Health Impact Assessment Toolkit⁴ as a guide. The nine determinants are used to identify how health and wellbeing is likely to be affected as a result of the preferred Masterplan Framework option. The assessment is based on the evidence available and challenges identified above. The likely health impacts are based on the information contained in the preferred Masterplan Framework. Since the details of the design are not available at this stage, this reflects a realistic worst-case scenario. Mitigation and enhancement measures are identified, which have the potential to improve health outcomes from those identified in the assessment.

4.3 Assessment criteria

The following nine priorities taken from HUDU Rapid Health Impact Assessment Toolkit set out the key objectives and assessment criteria for the HIA. They provide a description of the criteria that will be used to assess the Goldthorpe Masterplan Framework.

HIA priorities for Goldthorpe

Priority 1: Housing design and affordability

Not relevant for this Masterplan

Priority 2: Access to health and social care services and other social infrastructure

⁴ <https://www.healthyurbandevelopment.nhs.uk/wp-content/uploads/2019/10/HUDU-Rapid-HIA-Tool-October-2019.pdf>

Not relevant for this Masterplan.

Priority 3: Access to training & employment

This site is estimated to deliver around 204sq m of employment space and associated landscaping and could support over 3,000 FTE roles. In addition, there will be associated construction roles. The site will be attractive to several different end users, allowing for the creation of a wide variety of roles, hours and salaries. This HIA recognises the positive health impacts of new employment opportunities. Local job and skills recruitment will need to be in place to ensure residents have opportunities to benefit from these roles. Consideration should be taken to the provision of digital connections allowing people to work and learn at home. In addition, consideration should be taken to improved access and links to local and regional employment opportunities.

Priority 4: Access to open space and nature

The creation of new green infrastructure on this site will create economic, social, health and environmental value, together with helping to reduce the long-term costs to the borough of responding to climate change. The proposal will improve access for potential employees to use open natural space for physical activity & leisure before, during or after work. Trees and planting areas can contribute to health and mental wellbeing.

Re-location of attenuation pond off site has potential for green space access routes to complement RSPB Old Moor site. This will create high quality green space accessible for visitors and families, with links to wider open spaces. This will promote engagement with nature and biodiversity bringing wider mental wellbeing benefits for residents.

Priority 4: Air quality, noise and neighbourhood amenity

The impact of additional traffic on the designated Air Quality Management Areas in Hickleton and Marr is a key consideration for the HIA. During the delivery of the site, it is expected that potential impacts on air quality and health will reduce over future years due to cleaner and more efficient vehicles and the use of electric fleet vehicles with occupiers of the site. A detailed air quality assessment will be required to support future planning applications to quantify the impact of any development together with robust mitigation proposals to off-set impacts, including impact on human health.

Action should be taken to implement the HIA recommendations to minimise impacts of the development on air quality, noise, visual amenity and traffic for existing communities. Longer term impacts are likely to be reduced due to alternative technologies.

Priority 5: Accessibility and active travel

Barnsley Council has an Active Travel Strategy with the aim of enabling more people to walk and cycle to improve quality of life. This site includes improved connections to local train stations and enhancements of arterial routes including the A635 between Barnsley, the Dearne Valley and Doncaster. This includes integration with existing Public Rights of Way and movement routes to provide access to Bolton upon Dearne and Goldthorpe. Alongside other routes through and between development plots, this offers a good level of permeability. The successful implementation of the strategy will be particularly significant for the more deprived communities to the east of the borough where car ownership is lower.

Priority 6: Crime reduction and community safety

There are high levels of crime deprivation within the area and future planning applications should ensure mitigation measures are implemented to minimise crime levels or perceived threats of crime. Consideration should be taken to ensure access routes are legible and well-lit with visible

spaces that are accessible for all users. The HIA recommendations should be actioned to increase security and maintenance of the site and to assist in reducing crime levels within the locality.

Priority 7: Local amenities and access to healthy food

There is a range of local facilities within 10-minute walk of the site. It is unclear at this stage whether the proposal will facilitate access for businesses/employees to good quality, healthy food during or after work. Consideration should be taken to provision of a small affordable shop on site.

Priority 8: Climate change and sustainability

Sustainable development and reducing the borough's impact on climate change are the overarching principles of this Masterplan Framework in accordance with the Local Plan. The development of the Masterplan Framework has been assessed against the objective of securing sustainable development within Barnsley to meet its environmental, economic and social & health needs. The HIA recommendations should be actioned to minimise any negative health impacts for end users and the wider community.

Priority 9: Social cohesion and inclusive design

The HIA recommendations should be actioned including ensuring participation opportunities through a range of digital and non-digital methods at different stages of the planning process and a further detailed assessment of the proposal against the principles of inclusive design (specifically suicide prevention) and age friendly design.

Goldthorpe Masterplan framework Health Impact Assessment

Draft Version2

Date 31 August 2021

[Click here to enter text.](#)

4.4 Assessment

The following table sets out a high-level assessment of the Masterplan Framework against the nine health determinants. The potential health impact is ranked as either positive (will contribute to improving people's health), neutral (will not change from the baseline) or negative (will have a negative impact on people's health). The recommendations set out are to inform the development of the Masterplan Framework.

What impact will the proposal have on?						
Training & Employment	Impact		Certainty		Description of impact	Recommendation (to minimise or maximise impact)
	+	-	?	!		
Access to employment and training opportunities , including temporary construction and permanent 'end-use' jobs?	Y			Y	The site is for the creation of employment land, with an anticipated floorspace of over 200,000sq ft. Jobs will be created during the construction phase alongside permanent end use jobs, at a variety of levels and occupations.	Work with Enterprising Barnsley to run employment fairs and attract local workforce
Provision of a safe and pleasant working environment , designed to maximise participation in physical activity such as prominent stairwell positioning, prominent and secure cycle parking	Y			Y	The masterplan framework is designed within an attractive landscaped employment park including areas of informal greenspace. Active travel routes will be included into the site to promote	Ensure equal access of buildings for people with impaired mobility or a disability to shared spaces and buildings. Ensure the phasing of development is appropriately timed to ensure that active

Subject Draft Version2
Date 31 August 2021

Job No/Ref [Click here to enter text.](#)

What impact will the proposal have on?

Training & Employment	Impact		Certainty		Description of impact	Recommendation (to minimise or maximise impact)
	+	-	?	!		
					alternatives to car usage. Cycle parking will be included in plot design.	travel routes and greenspace is available from occupation of the first build.
Provision of accessible, diversity of job opportunities, appropriate to the skill sets present in local community.	Y			Y	A variety of end users are anticipated which will provide a range of employment opportunities. Additional green technology and solar farm will attract companies providing a range of job opportunities	Work with Employment & skills team and Enterprising Barnsley
Provision of child-care facilities and other support services.	?			?	Lack of suitable and affordable childcare can be a barrier to employment. The masterplan framework does not currently specifically include childcare facilities.	The provision of childcare facilities and services may be delivered within the private sector due to increased employment opportunities.
Supporting business start-up, development and survival.	?			?	A variety of plot sizes are anticipated to be developed. These would accommodate a variety of end users.	Work with Employment & skills team and Enterprising Barnsley

Subject Draft Version2

Date 31 August 2021

Job No/Ref

[Click here to enter text.](#)

What impact will the proposal have on?

Access to open space & nature	Impact		Certainty		Description of impact	Recommendation (to minimise or maximise impact)
	+	-	?	!		
Provision and safeguarding of new open or natural space, or improving access to existing spaces?	Y			Y	The proposal will improve access for potential employees to use open natural space for physical activity & leisure before, during or after work. Trees and planting areas can contribute to health and mental wellbeing.	Ensure active travel routes improve access to green space.
Provision and opportunities for active play and exercise through a range of play spaces for children and young people?	NA				Formal recreation play areas are not proposed within the masterplan framework site due to the nature of the development.	Safe active travel routes to be included within the site.
Links between open and natural spaces and the public realm?	Y			Y	Re-location of attenuation pond off site has potential for green space access routes to complement RSPB Old Moor site.	Improve active travel routes surrounding the site and within the site.
Open and natural spaces that are welcoming, safe and accessible for all?	Y			Y	The Equality Impact Assessment has considered accessibility to open space for all community groups	
Management & maintenance of new open space	Y			Y	Anticipated that future occupiers of the employment units will enter a service charge arrangement run by local management organisation or	Agree management & maintenance responsibilities with suitable trust.

Subject Draft Version2

Date 31 August 2021

Job No/Ref

[Click here to enter text.](#)

What impact will the proposal have on?						
Access to open space & nature	Impact		Certainty		Description of impact	Recommendation (to minimise or maximise impact)
	+	-	?	!		
					trust specialising in maintaining open space and detention basins.	

Subject Draft Version2
Date 31 August 2021

Job No/Ref

[Click here to enter text.](#)

What impact will the proposal have on?

Air quality and noise	Impact		Certainty		Description of impact	Recommendation (to minimise or maximise impact)
	+	-	?	!		
Minimising construction impacts such as dust, congestion, construction noise		Y		?	During the construction phase of the proposed development, there is the potential for construction impacts to be a nuisance. This is not considered further at masterplan stage but will be dealt with in future planning applications. Longer term impacts are likely to be reduced due to alternative technologies.	At planning application stage, detailed construction method statements should be submitted to outline how this will be dealt with.
Minimising Air pollution caused by increased traffic, energy & industrial developments)		Y	?		Impacts on air quality both within the Barnsley and Doncaster networks are discussed in the masterplan framework. All buildings will be required to have electric vehicle charging points and a travel plan will be required.	Air quality modelling to be undertaken as part of future planning application submission in agreement with both Barnsley and Doncaster Councils.
Minimising Noise pollution caused by traffic and commercial uses.	Y		?		The Masterplan Framework provides green landscaping buffers around the employment site to key receptors including existing residential communities. These will help to reduce potential noise pollution for surrounding communities.	Noise assessment to be undertaken with future planning applications.

Subject Draft Version2

Date 31 August 2021

Job No/Ref

[Click here to enter text.](#)

What impact will the proposal have on?

Air quality and noise	Impact		Certainty		Description of impact	Recommendation (to minimise or maximise impact)
	+	-	?	!		

What impact will the proposal have on?

Accessibility and active travel	Impact		Certainty		Description of impact	Recommendation (to minimise or maximise impact)
	+	-	?	!		
Prioritising and enabling walking such as Low Traffic Neighbourhoods, School Streets.	Y			?	The Masterplan Framework promotes active travel through providing various walking and cycling routes encouraging people to walk and get outside for recreation, access to local amenities and commuting purposes. This includes integration with existing Public Rights of Way and movement routes to provide access to Bolton upon Dearne and Goldthorpe. Alongside other routes through and between development plots, this offers a good level of permeability.	Ensure the development limits traffic speeds within the masterplan framework area.

Subject Draft Version2
Date 31 August 2021

Job No/Ref

[Click here to enter text.](#)

What impact will the proposal have on?

Air quality and noise	Impact		Certainty		Description of impact	Recommendation (to minimise or maximise impact)
	+	-	?	!		
Prioritising and enabling cycling including safe, accessible routes, secure cycle parking & showers.	Y		Y		The Masterplan Framework promotes active travel through providing various walking and cycling routes, encouraging people to walk and get outside for recreation, access to local amenities and commuting purposes. This includes integration with existing Public Rights of Way and movement routes to provide access to Bolton upon Dearne and Goldthorpe. Alongside other routes through and between development plots, this offers a good level of permeability.	Cycle routes and provision will be included in future planning applications.
Connecting public realm and internal routes to local and strategic cycle and walking networks?	Y		Y		Cycle networks and walking routes will link into existing routes within the wider locality. Cycle routes should be segregated from traffic and walking routes provide safe alternatives.	Cycle routes and walking routes to be shown within the masterplan framework and ensure that these routes are delivered in planning applications.
Traffic management and calming measures to help reduce and minimise road injuries?	Y		Y		The road layout design within the masterplan framework site will be designed for appropriate speeds.	Traffic Assessment and travel plans to be submitted with future planning applications. Ensure road design meets DMRB (Design Manual for Roads and Bridges) standards.

Subject Draft Version2

Date 31 August 2021

Job No/Ref

[Click here to enter text.](#)

What impact will the proposal have on?

Air quality and noise	Impact		Certainty		Description of impact	Recommendation (to minimise or maximise impact)
	+	-	?	!		
Connectedness to public transport, local services and facilities?	Y		Y		Site is accessible by bus and train.	Discussions to be held with Barnsley Bus Partnership to understand if scope for additional services on existing bus routes. Travel plan to be submitted with planning application.
Reducing car use by minimising car parking provision, supported by the controlled parking zones, car clubs and travel plans measures?	Y			?	Reliance upon car ownership will be balanced against the need to provide sufficient parking to ensure that neighbouring residential areas are not impacted upon, whilst limiting parking to encourage alternative travel options.	Travel plans submitted with planning applications.
Accessibility for people with mobility problems or a disability to access buildings and places?	Y		Y		Buildings to be DDA compliant and public realm to be designed to allow access for all.	

Subject Draft Version2
Date 31 August 2021

Job No/Ref [Click here to enter text.](#)

What impact will the proposal have on?

Access to healthy food	Impact		Certainty		Description of impact	Recommendation (to minimise or maximise impact)
	+	-	?	!		
Facilitating local access to a supply of affordable, healthy food such as allotments, community farms/cafes and farmers markets.	?			?	There is a range of local facilities within 10-minute walk of the site. It is unclear at this stage whether the proposal will facilitate access for businesses/employees to good quality, healthy food during or after work.	Further consultation about potential projects to improve employee/community access to local fresh produce and use of green space for food growing
Range of retail uses , including food stores and smaller affordable shops for social enterprises?	Y		Y		There is a range of local facilities within 10-minute walk of the site. Future employees can access a local Aldi supermarket and other local shops.	Consideration to small local shop within the site
Contributing towards over-concentration of fast food / unhealthy food outlets in a single area, in particular along school routes.					No fast-food outlet is planned as part of the proposal	

Subject Draft Version2

Date 31 August 2021

Job No/Ref

[Click here to enter text.](#)

What impact will the proposal have on?

Access to healthy food	Impact		Certainty		Description of impact	Recommendation (to minimise or maximise impact)
	+	-	?	!		
Safeguarding loss of allotments, good agricultural land, gardens or other growing land.	Y		Y		No existing land will be lost for food growing purposes	

Subject Draft Version2

Date 31 August 2021

Job No/Ref

[Click here to enter text.](#)

What impact will the proposal have on?

Crime Reduction and Community Safety	Impact		Certainty		Description of impact	Recommendation (to minimise or maximise impact)
	+	-	?	!		
Crime prevention - incorporating elements to help design out crime and help people feel secure	Y		?		There are high levels of crime deprivation within the area and future planning applications should ensure mitigation measures are implemented to minimise crime levels or perceived threats of crime.	Ensure plot design allows for natural surveillance.
Promoting maximum use of buildings and public spaces by a variety of different groups.	Y		?		Buildings will be in private ownership and will be available for a variety of end users.	
Promoting a sense of ownership , respect, territorial responsibility and community, including meaningful community & voluntary sector participation	?		?		Employment uses can result in the site being empty outside of core work hours and weekends depending on nature of employment. This may impact of the health of neighbouring residents if it is perceived that there will be an increase in antisocial behaviours.	Inclusion of community involvement within landscape management organisation to create a sense of ownership.

Subject Draft Version2

Date 31 August 2021

Job No/Ref [Click here to enter text.](#)

What impact will the proposal have on?						
Crime Reduction and Community Safety	Impact		Certainty		Description of impact	Recommendation (to minimise or maximise impact)
	+	-	?	!		
Maximising use of security, management and maintenance	?		?		Plot design will follow design principles within the masterplan framework. Planning applications will be subject to comment from Secured by Design Police Officers.	Increased security and maintenance of the site will assist in reducing crime levels within the locality.

Subject Draft Version2

Date 31 August 2021

Job No/Ref [Click here to enter text.](#)

What impact will the proposal have on?						
Climate Change and Energy Usage	Impact		Certainty		Description of impact	Recommendation (to minimise or maximise impact)
	+	-	?	!		
Promoting renewable energy use such as wind and solar	Y			Y	Masterplan framework will encourage the use of renewable energy use within the site such as solar roofs. There may also be potential to provide electricity to the site from a proposed solar farm to the south.	
Ensuring that buildings and public spaces are designed to respond to varying temperatures- ventilation, shading and landscaping?	Y			Y	Sustainable design and materials are a key requirement within the masterplan framework.	Planning applications will demonstrate sustainability credentials.
Maintaining or enhancing biodiversity?	Y			Y	Masterplan Framework has a requirement for the site to provide a minimum of 10% Biodiversity Net Gain. This could be provided on site or off site, which may have a more positive impact on the local community.	Biodiversity will be secured through planning conditions and/or S.106. Opportunities for community involvement may be possible.
Reducing carbon emissions and pollution such as insulation, sustainable construction methods, EV charging points	Y			Y	EV charging points required for all buildings within the masterplan framework, which enables use of electric vehicles and contributing to improved air quality and human health.	Planning applications will need to demonstrate compliance with masterplan framework and local plan policy.

Subject Draft Version2
Date 31 August 2021

Job No/Ref [Click here to enter text.](#)

What impact will the proposal have on?

Climate Change and Energy Usage	Impact		Certainty		Description of impact	Recommendation (to minimise or maximise impact)
	+	-	?	!		
Encouraging recycling, including building materials?	Y			?	Sustainable design and materials are a key requirement.	Planning applications will demonstrate sustainability credentials.
Sustainable design and construction methods	Y			Y	Sustainable building design and construction discussed within masterplan framework.	Planning applications will be expected to comply with requirements of masterplan framework.
Minimising risk of flooding to incorporate sustainable urban drainage techniques?	Y			Y	Development will address flooding issues within the site. A drainage strategy and Preliminary Flood Risk Assessment has been produced. SUDS will be designed within the site to control water within the employment site and will bring biodiversity improvements. This provides preventative measures to reduce impacts on human health.	Drainage will be considered in future planning applications and secured by condition.

Subject Draft Version2

Date 31 August 2021

Job No/Ref

[Click here to enter text.](#)

What impact will the proposal have on?

Social Cohesion and Inclusive design	Impact		Certainty		Description of impact	Recommendation (to minimise or maximise impact)
	+	-	?	!		
Health inequalities by addressing local needs through community engagement?	Y			Y	Engagement with community groups, businesses and local stakeholders provides opportunities for understanding and addressing local requirements and involvement in decision making	Build in ongoing participation opportunities through a range of methods – digital/non digital at different stages of the planning process.
Connecting with existing communities , i.e layout and movement to avoid physical barriers, severance with land uses & spaces to encourage social interaction/prevent suicide?	Y			Y	Layout will enhance connectivity within and across the area between existing communities. Green corridors, active travel routes and open areas will encourage social interaction amongst employees. The provision of a range of diverse local employment opportunities (paid and unpaid) could improve both social cohesion and mental wellbeing.	Accessible routes with clear waymarking
Principles of inclusive and age-friendly design?	Y		Y		All age groups affected will have opportunities to benefit from inclusive and age friendly design e.g. accessible routes; meeting points; places to sit	Further detailed assessment of the proposal against the principles of inclusive design (specifically suicide prevention) and age friendly design

Subject Draft Version2

Date 31 August 2021

Job No/Ref

[Click here to enter text.](#)

What impact will the proposal have on?						
Social Cohesion and Inclusive design	Impact		Certainty		Description of impact	Recommendation (to minimise or maximise impact)
	+	-	?	!		
Creating mixed communities with a variety of tenures and uses	NA		NA			

Goldthorpe Masterplan framework Health Impact Assessment

Draft Version2

Date

31 August 2021

[Click here to enter text.](#)